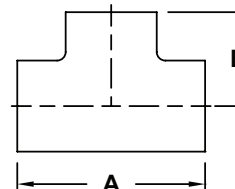


Polished Weld Tees

Short - B7WWW



Tube OD	Dimensions		Wall Thickness	Polished ID/OD	Polished ID/OD
	A	B		304 Stainless Steel Part #	316L Stainless Steel Part #
1"	2.250"	1.125"	.065"	B7WWW-G100P	B7WWW-R100P
1½"	3.312"	1.656"	.065"	B7WWW-G150P	B7WWW-R150P
2"	4.124"	2.062"	.065"	B7WWW-G200P	B7WWW-R200P
2½"	4.688"	2.344"	.065"	B7WWW-G250P	B7WWW-R250P
3"	5.188"	2.594"	.065"	B7WWW-G300P	B7WWW-R300P
4"	6.876"	3.438"	.083"	B7WWW-G400P	B7WWW-R400P

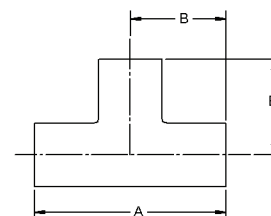


Sanitary Fittings

Long - B7W



Tube OD	Dimensions		Wall Thickness	Polished ID/OD	Polished ID/OD
	A	B		304 Stainless Steel Part #	316L Stainless Steel Part #
¾"	4.000"	2.000"	.065"	---	B7W-R75P
1"	3.750"	1.875"	.065"	B7W-G100P	B7W-R100P
1½"	4.500"	2.250"	.065"	B7W-G150P	B7W-R150P
2"	6.000"	3.000"	.065"	B7W-G200P	B7W-R200P
2½"	6.000"	3.000"	.065"	B7W-G250P	B7W-R250P
3"	6.500"	3.250"	.065"	B7W-G300P	B7W-R300P
4"	7.750"	3.875"	.083"	B7W-G400P	B7W-R400P



Reducing - B7RWWW



Tube OD	Dimensions				Wall Thick.	Polished ID/OD	Polished ID/OD
	A	B	C	D		304 Stainless Steel Part #	316L Stainless Steel Part #
1½" x 1"	3.312"	1.375"	1.500"	1.000"	.065"	B7RWWW-G150100P	B7RWWW-R150100P
2" x 1"	4.124"	1.625"	2.000"	1.000"	.065"	B7RWWW-G200100P	B7RWWW-R200100P
2" x 1½"	4.124"	1.906"	2.000"	1.500"	.065"	B7RWWW-G200150P	B7RWWW-R200150P
2½" x 1½"	4.688"	2.156"	2.500"	1.500"	.065"	B7RWWW-G250150P	B7RWWW-R250150P
2½" x 2"	4.688"	2.312"	2.500"	2.000"	.065"	B7RWWW-G250200P	B7RWWW-R250200P
3" x 1½"	5.188"	2.406"	3.000"	1.500"	.065"	B7RWWW-G300150P	B7RWWW-R300150P
3" x 2"	5.188"	2.562"	3.000"	2.000"	.065"	B7RWWW-G300200P	B7RWWW-R300200P
4" x 2"	6.876"	3.062"	4.000"	2.000"	.083"	B7RWWW-G400200P	B7RWWW-R400200P
4" x 3"	6.876"	3.094"	4.000"	3.000"	.083"	B7RWWW-G400300P	B7RWWW-R400300P

